

Financial highlights

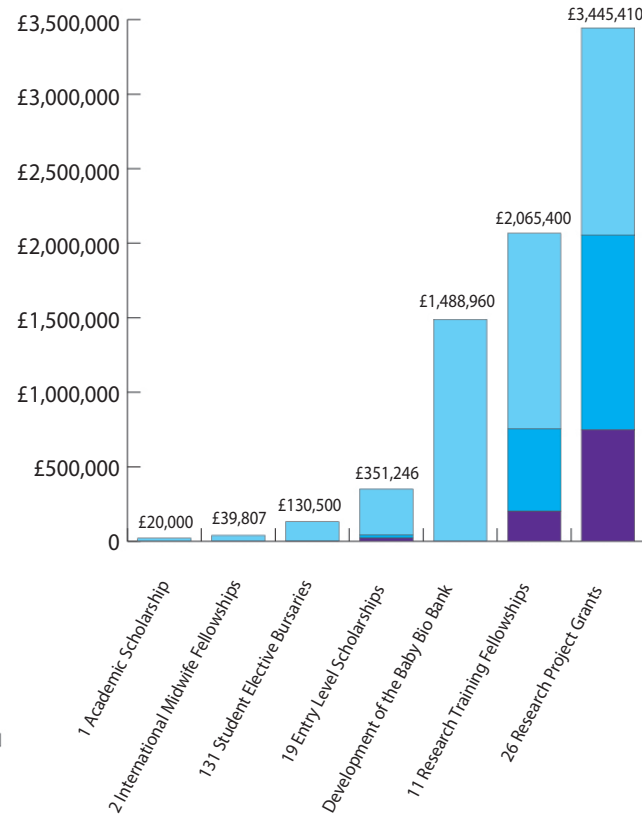
In the 50th anniversary year, Wellbeing of Women is delighted to have spent £1.5 million on research and training. In total we have spent over £50 million on research over the past 50 years!



WELLBEING OF WOMEN

Research and Training Expenditure 2010 – 2014

Total £7,541,323



£1.5 million spent on Research in 2014

£213,613

Gynaecological Cancer

£1,006,594

Pregnancy and Birth

£240,993

Quality of Life

4

Research Project Grants

3

Research Training Fellowship

5

Entry Level Scholarships

28

Student Bursaries

1

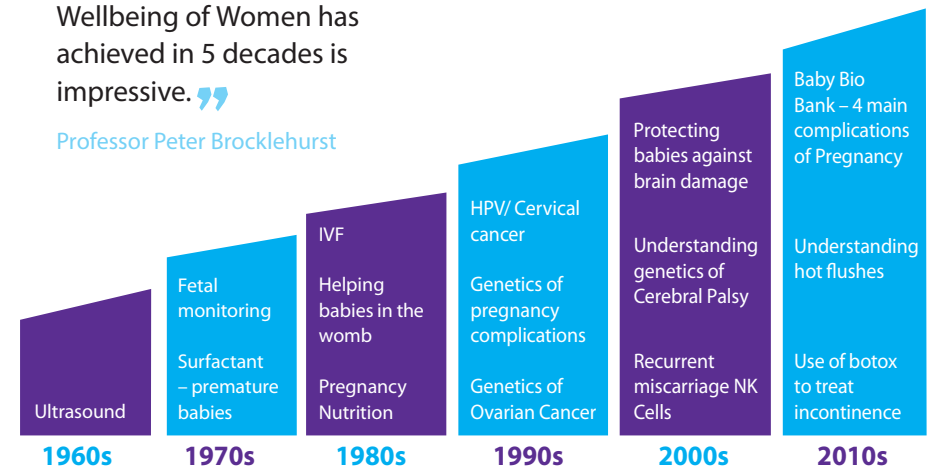
International Midwife Fellowship

1

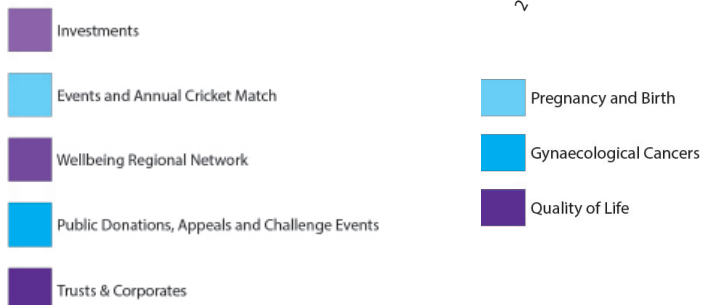
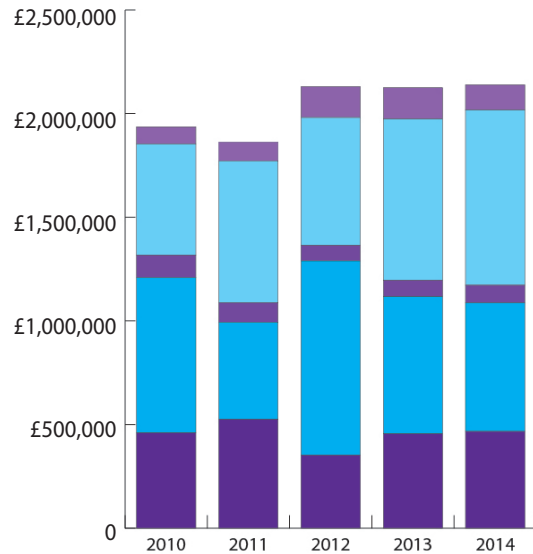
Academic Scholarship

“To have a breakthrough piece of research every decade is a great achievement – what Wellbeing of Women has achieved in 5 decades is impressive.”

Professor Peter Brocklehurst



Income 2010-2014



STATEMENT OF FINANCIAL ACTIVITIES

for the year ended 31 December 2014
(INCORPORATING INCOME & EXPENDITURE ACCOUNT)

Incoming resources

Generated Funds:

	2014 £'000	2014 £'000	2014 £'000	2013 £'000
Voluntary	913.8	783.9	1697.7	1429.7
Activities to generate funds				
Events	319.3		319.3	463.6
Investments	122.2		122.2	151.1
Other incoming resources				80.9
INCOMING RESOURCES	1355.3	783.9	2139.2	2125.3

Resources expended

Costs of generating funds

Fundraising	631.8		631.8	584.3
Cost of Challenge events	3.0		3.0	3.1
Cost of events	97.6		97.6	264.6
Investment management	7.4		7.4	7.0
COSTS OF GENERATING FUNDS	739.8		739.8	859.0

CHARITABLE ACTIVITIES

Research	400.5	175.2	575.7	1195.8
Training	247.8	463.9	711.7	447.9
Research and Training Administration	96.0		96.0	80.9
Education	131.8	4.0	135.8	141.0

TOTAL EXPENDITURE ON CHARITABLE ACTIVITIES

Governance costs	92.5		92.5	83.1
------------------	------	--	------	------

TOTAL EXPENDITURE

Net (expenditure) / income before transfers	-353.1	140.7	-212.3	-682.4
Transfer to fund Restricted Grants	8.1	-8.1		
Net Incoming resources before gains/losses	-345.0	132.7	-212.3	-682.4
Realised Gains/Losses on Investments	-11.2		-11.2	6.2
Net income/(expenditure)	-356.2	132.7	-223.5	-676.2
Unrealised Gains/Losses on Investments	105.5		105.5	212.0

NET MOVEMENT IN FUNDS FOR THE YEAR

Balance brought forward at 1st January	1115.7	503.8	1619.5	2083.7
Balance carried forward at 31st December	865.0	636.5	1501.5	1619.5

BALANCE SHEET

FIXED ASSETS

Tangible assets
Investments

CURRENT ASSETS

Debtors
Cash at bank and in hand

CREDITORS: Amounts falling due within one year

NET CURRENT LIABILITIES

TOTAL ASSETS LESS CURRENT LIABILITIES

CREDITORS: Amounts falling due in more than one year

TOTAL NET ASSETS

FUNDS

UNRESTRICTED FUNDS

General

Designated to underwrite Grants Awarded

TOTAL UNRESTRICTED FUNDS

RESTRICTED FUNDS

TOTAL FUNDS

Trustees statement

The above information is extracted from the full trustees' report and financial statements which have been audited by HW Fisher & Company who gave an unqualified audit report on 26th May 2015. The auditors have confirmed to the trustees that the summarised financial statements are consistent with the full financial statements for the year ended 31st December 2014. The trustees report and financial statements were approved by the trustees and signed on their behalf on 19th May 2015. They have been submitted to the Charity Commission and the Office of the Scottish Charity Regulator. These summarised financial statements may not contain sufficient information to gain a complete understanding of the financial affairs of the charity. The full trustees report, audit report and financial statements may be obtained from Wellbeing of Women.

Signed on behalf of the Trustees,
Sir Victor Blank
Chairman
19th May 2015



Wellbeing of Women First Floor, Fairgate House, 78 New Oxford St, London, WC1A 1HB
T:020 3697 7000 E: hello@wellbeingofwomen.org.uk www.wellbeingofwomen.org.uk

2014 £'000	2013 £'000
52.3	65.3
3769.1	3559.7
3821.4	3625.0
215.8	346.5
187.3	323.1
403.1	669.6
-1660.7	-1728.5
-1257.6	-1058.9
2563.8	2566.1
-1062.3	-946.6
1501.5	1619.5

2014 £'000	2013 £'000
559.2	944.0
305.8	171.7
865.0	1115.7
636.5	503.8
1501.5	1619.5